



TTtwo2three

The Translator Tool for Seamless Migration of TTCN-2 to TTCN-3 Technology

The TTtwo2three translator ensures a seamless migration of TTCN-2 to TTCN-3 technology. Previous investments in TTCN-2 test suites are saved and can be followed up with the powerful and standardized test language TTCN-3.

What Can Be Migrated?

- Test suites
- TTCN-2 types and data
- ASN.1 types and data
- Behavior (test cases, test steps, defaults)

Reasons for Migration

- Your current test suite is not powerful enough to meet latest demands
- Your test suite shall be maintained or extended while reducing costs
- New test configurations using existing technologies shall be created
- Your favorite test platform ceases the support of test devices

Benefits

- Efficient test suites design
 - Dynamic configuration
 - Distributed, load and scalability testing
 - Synchronous communication
- Graphical presentation format
- Extended variety of applications
 - Mobile, broadband technologies, WLAN
 - Middleware platforms and internet protocol testing
- Little effort to integrate test devices or other third applications

Features

- Unified handling of defaults and test steps
- Support of concurrent and non-concurrent test suites
- Full ASN.1 support
- Highly customizable, automated translation into TTCN-3
- Close relation of generated TTCN-3 to TTCN-2 source
- Prefixed and postfix identifiers for increased readability
- Modularization into type, component and test behavior modules for easy reuse of generated TTCN-3
- Detailed translation information and statistics

TTtwo2three

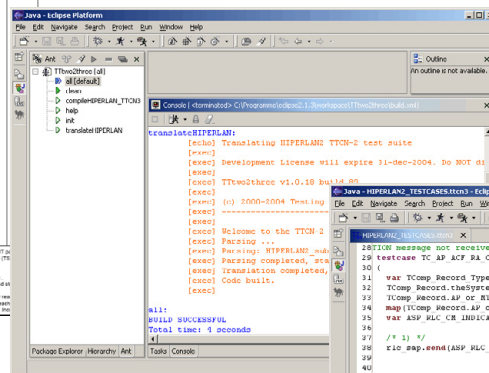
The Translator Tool for Seamless Migration of TTCN-2 to TTCN-3 Technology

Standards

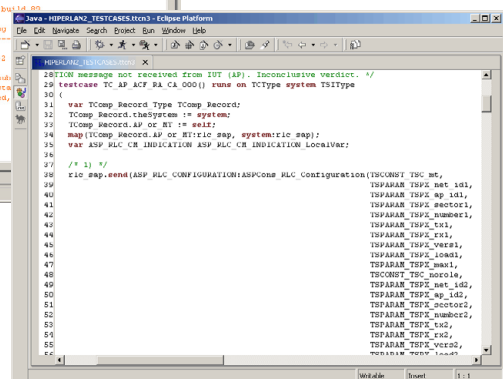
- ISO/IEC 9464-3: Information technology – Open systems interconnection – Conformance testing methodology and framework - Part 3: The Tree and Tabular combined Notation (TTCN), 1996
- ITU-T Recommendation X.680: Information technology – Abstract Syntax Notation One (ASN.1), 1997
- ETSI TR 100 666 V1.0.0: Information technology – Open Systems Interconnection Conformance testing methodology and framework – Part 3: The Tree and Tabular Combined Notation (TTCN) (Edition 2+), 1999-05
- ETSI TR 101 874 V1.1.1 TTCN-2 to TTCN-3 Mapping, 2000-12
- ETSI ES 201 873-4 V3.2.1 TTCN-3 Operational Semantics, 2007-02
- ETSI ES 201 873-1 TTCN-3 Core Language V3.2.1, 2007-02

Id	Label	Behaviour Description	Comments Ref	Verdict	Comments
1	START TAC	RLC_CM_INDICATION	RLC_CM_indication_msg1		
2	START TAC	RLC_CM_ACK_INDICATION	RLC_CM_ack_indication_msg1		
3	START TAC	RLC_CM_RETX_INDICATION	RLC_CM_retx_indication_msg1		
4	START TAC	RLC_CM_RETX_INDICATION	RLC_CM_retx_indication_msg1		
5	START TAC	RLC_CM_RETX_INDICATION	RLC_CM_retx_indication_msg1		
6	START TAC	RLC_CM_RETX_INDICATION	RLC_CM_retx_indication_msg1		
7	START TAC	RLC_CM_RETX_INDICATION	RLC_CM_retx_indication_msg1		
8	START TAC	RLC_CM_RETX_INDICATION	RLC_CM_retx_indication_msg1		
9	START TAC	RLC_CM_RETX_INDICATION	RLC_CM_retx_indication_msg1		
10	START TAC	RLC_CM_RETX_INDICATION	RLC_CM_retx_indication_msg1		
11	START TAC	RLC_CM_RETX_INDICATION	RLC_CM_retx_indication_msg1		
12	START TAC	RLC_CM_RETX_INDICATION	RLC_CM_retx_indication_msg1		
13	START TAC	RLC_CM_RETX_INDICATION	RLC_CM_retx_indication_msg1		
14	START TAC	RLC_CM_RETX_INDICATION	RLC_CM_retx_indication_msg1		
15	START TAC	RLC_CM_RETX_INDICATION	RLC_CM_retx_indication_msg1		
16	START TAC	RLC_CM_RETX_INDICATION	RLC_CM_retx_indication_msg1		
17	START TAC	RLC_CM_RETX_INDICATION	RLC_CM_retx_indication_msg1		
18	START TAC	RLC_CM_RETX_INDICATION	RLC_CM_retx_indication_msg1		
19	START TAC	RLC_CM_RETX_INDICATION	RLC_CM_retx_indication_msg1		
20	START TAC	RLC_CM_RETX_INDICATION	RLC_CM_retx_indication_msg1		
21	START TAC	RLC_CM_RETX_INDICATION	RLC_CM_retx_indication_msg1		
22	START TAC	RLC_CM_RETX_INDICATION	RLC_CM_retx_indication_msg1		
23	START TAC	RLC_CM_RETX_INDICATION	RLC_CM_retx_indication_msg1		
24	START TAC	RLC_CM_RETX_INDICATION	RLC_CM_retx_indication_msg1		
25	START TAC	RLC_CM_RETX_INDICATION	RLC_CM_retx_indication_msg1		
26	START TAC	RLC_CM_RETX_INDICATION	RLC_CM_retx_indication_msg1		
27	START TAC	RLC_CM_RETX_INDICATION	RLC_CM_retx_indication_msg1		
28	START TAC	RLC_CM_RETX_INDICATION	RLC_CM_retx_indication_msg1		
29	START TAC	RLC_CM_RETX_INDICATION	RLC_CM_retx_indication_msg1		
30	START TAC	RLC_CM_RETX_INDICATION	RLC_CM_retx_indication_msg1		
31	START TAC	RLC_CM_RETX_INDICATION	RLC_CM_retx_indication_msg1		
32	START TAC	RLC_CM_RETX_INDICATION	RLC_CM_retx_indication_msg1		
33	START TAC	RLC_CM_RETX_INDICATION	RLC_CM_retx_indication_msg1		
34	START TAC	RLC_CM_RETX_INDICATION	RLC_CM_retx_indication_msg1		
35	START TAC	RLC_CM_RETX_INDICATION	RLC_CM_retx_indication_msg1		
36	START TAC	RLC_CM_RETX_INDICATION	RLC_CM_retx_indication_msg1		
37	START TAC	RLC_CM_RETX_INDICATION	RLC_CM_retx_indication_msg1		
38	START TAC	RLC_CM_RETX_INDICATION	RLC_CM_retx_indication_msg1		
39	START TAC	RLC_CM_RETX_INDICATION	RLC_CM_retx_indication_msg1		
40	START TAC	RLC_CM_RETX_INDICATION	RLC_CM_retx_indication_msg1		
41	START TAC	RLC_CM_RETX_INDICATION	RLC_CM_retx_indication_msg1		
42	START TAC	RLC_CM_RETX_INDICATION	RLC_CM_retx_indication_msg1		
43	START TAC	RLC_CM_RETX_INDICATION	RLC_CM_retx_indication_msg1		
44	START TAC	RLC_CM_RETX_INDICATION	RLC_CM_retx_indication_msg1		
45	START TAC	RLC_CM_RETX_INDICATION	RLC_CM_retx_indication_msg1		
46	START TAC	RLC_CM_RETX_INDICATION	RLC_CM_retx_indication_msg1		
47	START TAC	RLC_CM_RETX_INDICATION	RLC_CM_retx_indication_msg1		
48	START TAC	RLC_CM_RETX_INDICATION	RLC_CM_retx_indication_msg1		
49	START TAC	RLC_CM_RETX_INDICATION	RLC_CM_retx_indication_msg1		
50	START TAC	RLC_CM_RETX_INDICATION	RLC_CM_retx_indication_msg1		
51	START TAC	RLC_CM_RETX_INDICATION	RLC_CM_retx_indication_msg1		
52	START TAC	RLC_CM_RETX_INDICATION	RLC_CM_retx_indication_msg1		
53	START TAC	RLC_CM_RETX_INDICATION	RLC_CM_retx_indication_msg1		
54	START TAC	RLC_CM_RETX_INDICATION	RLC_CM_retx_indication_msg1		
55	START TAC	RLC_CM_RETX_INDICATION	RLC_CM_retx_indication_msg1		
56	START TAC	RLC_CM_RETX_INDICATION	RLC_CM_retx_indication_msg1		
57	START TAC	RLC_CM_RETX_INDICATION	RLC_CM_retx_indication_msg1		
58	START TAC	RLC_CM_RETX_INDICATION	RLC_CM_retx_indication_msg1		
59	START TAC	RLC_CM_RETX_INDICATION	RLC_CM_retx_indication_msg1		
60	START TAC	RLC_CM_RETX_INDICATION	RLC_CM_retx_indication_msg1		
61	START TAC	RLC_CM_RETX_INDICATION	RLC_CM_retx_indication_msg1		
62	START TAC	RLC_CM_RETX_INDICATION	RLC_CM_retx_indication_msg1		
63	START TAC	RLC_CM_RETX_INDICATION	RLC_CM_retx_indication_msg1		
64	START TAC	RLC_CM_RETX_INDICATION	RLC_CM_retx_indication_msg1		
65	START TAC	RLC_CM_RETX_INDICATION	RLC_CM_retx_indication_msg1		
66	START TAC	RLC_CM_RETX_INDICATION	RLC_CM_retx_indication_msg1		
67	START TAC	RLC_CM_RETX_INDICATION	RLC_CM_retx_indication_msg1		
68	START TAC	RLC_CM_RETX_INDICATION	RLC_CM_retx_indication_msg1		
69	START TAC	RLC_CM_RETX_INDICATION	RLC_CM_retx_indication_msg1		
70	START TAC	RLC_CM_RETX_INDICATION	RLC_CM_retx_indication_msg1		
71	START TAC	RLC_CM_RETX_INDICATION	RLC_CM_retx_indication_msg1		
72	START TAC	RLC_CM_RETX_INDICATION	RLC_CM_retx_indication_msg1		
73	START TAC	RLC_CM_RETX_INDICATION	RLC_CM_retx_indication_msg1		
74	START TAC	RLC_CM_RETX_INDICATION	RLC_CM_retx_indication_msg1		
75	START TAC	RLC_CM_RETX_INDICATION	RLC_CM_retx_indication_msg1		
76	START TAC	RLC_CM_RETX_INDICATION	RLC_CM_retx_indication_msg1		
77	START TAC	RLC_CM_RETX_INDICATION	RLC_CM_retx_indication_msg1		
78	START TAC	RLC_CM_RETX_INDICATION	RLC_CM_retx_indication_msg1		
79	START TAC	RLC_CM_RETX_INDICATION	RLC_CM_retx_indication_msg1		
80	START TAC	RLC_CM_RETX_INDICATION	RLC_CM_retx_indication_msg1		
81	START TAC	RLC_CM_RETX_INDICATION	RLC_CM_retx_indication_msg1		
82	START TAC	RLC_CM_RETX_INDICATION	RLC_CM_retx_indication_msg1		
83	START TAC	RLC_CM_RETX_INDICATION	RLC_CM_retx_indication_msg1		
84	START TAC	RLC_CM_RETX_INDICATION	RLC_CM_retx_indication_msg1		
85	START TAC	RLC_CM_RETX_INDICATION	RLC_CM_retx_indication_msg1		
86	START TAC	RLC_CM_RETX_INDICATION	RLC_CM_retx_indication_msg1		
87	START TAC	RLC_CM_RETX_INDICATION	RLC_CM_retx_indication_msg1		
88	START TAC	RLC_CM_RETX_INDICATION	RLC_CM_retx_indication_msg1		
89	START TAC	RLC_CM_RETX_INDICATION	RLC_CM_retx_indication_msg1		
90	START TAC	RLC_CM_RETX_INDICATION	RLC_CM_retx_indication_msg1		
91	START TAC	RLC_CM_RETX_INDICATION	RLC_CM_retx_indication_msg1		
92	START TAC	RLC_CM_RETX_INDICATION	RLC_CM_retx_indication_msg1		
93	START TAC	RLC_CM_RETX_INDICATION	RLC_CM_retx_indication_msg1		
94	START TAC	RLC_CM_RETX_INDICATION	RLC_CM_retx_indication_msg1		
95	START TAC	RLC_CM_RETX_INDICATION	RLC_CM_retx_indication_msg1		
96	START TAC	RLC_CM_RETX_INDICATION	RLC_CM_retx_indication_msg1		
97	START TAC	RLC_CM_RETX_INDICATION	RLC_CM_retx_indication_msg1		
98	START TAC	RLC_CM_RETX_INDICATION	RLC_CM_retx_indication_msg1		
99	START TAC	RLC_CM_RETX_INDICATION	RLC_CM_retx_indication_msg1		
100	START TAC	RLC_CM_RETX_INDICATION	RLC_CM_retx_indication_msg1		

TTCN-2 Source



Translation



Translated TTCN-3

Reference Platforms

- Java 5.0 (Sun, IBM or BEA)
- Microsoft Windows XP, x86-32
- Red Hat Enterprise Linux 5.0, x86-32 and 4.0 update 2, x86-64, GTK
- Fedora 7, x86-32 and x86-64, GTK
- SUSE Linux Enterprise Server 10, x86-32, GTK